



# THE NORMAL MARCHING BAND

## Illinois Valley Central Marching Band Competition

SATURDAY, SEPTEMBER 20, 2025

### What to pack

Parents who are interested in riding the bus, chaperoning, helping with the crew, etc. should sign up at [normalmb.org](http://normalmb.org).

Be sure to eat a healthy breakfast/lunch before rehearsal and drink plenty of water.

Remember your black socks, marching shoes, and appropriate garments for under your uniform. Also remember to remove nail polish and bring hair spray, bobby pins, etc.

Bring a sack dinner or money for concessions. Cash, Card, and QR code payments accepted.

If you plan to shower after rehearsal, bring your shower accessories.

### Itinerary

before

Be sure to eat healthy and drink plenty of water on the day of the event. Eat lunch before rehearsal.

11:00 AM

Rehearsal at NCWHS

~2:00 PM

Rehearsal ends, pack/load trucks (everyone is responsible for making sure that their equipment makes it to the show—either on the bus or to the parent crew who is loading.)

- Drum Line and Front Ensemble, take instruments to truck right away for loading
- Polish brass instruments (sousaphones do this first and load horns on truck)
- Showers available if you choose, prepare hair, color guard makeup
- Eat snacks, drink water, relax

3:00 PM

Load buses, depart for Illinois Valley Central High School. Bring your water with you.

**New in 2025: Students must scan their IDs each time they load Unit 5 buses.**

~4:15 PM

Arrive at IVC - unload, eat sack dinner or visit concessions stand, change into uniform, prepare for the show

5:50 PM

In Uniform, stretch by the buses if there is ample space

6:15 PM

Warm Up in Area S2 – this is a shorter warmup period than usual, so please be attentive

7:00 PM

Depart from Warm Up Area S2

7:05 PM

At gate

7:15 PM

**NMB Performance – Go, Team, Go!**

Following our performance, we will return to the buses, change out of uniform, and load the truck. You will be permitted to return to the stadium and watch awards.

Drum Majors should report to the south gate for awards, in uniform, at 8:15 PM.

8:45 PM

Presentation of Awards

~10:30 PM

Arrive at NCWHS

### A Note from the NMB Directors

We have learned new parts of the show and improved a ton since the first competition! It will be great to share this show with others and see what they have been working on. Remember to represent the NMB at your very best, both on and off the field. Be sure to thank the volunteers for their hard work and be respectful of them – we couldn't do this without them! Lastly, encourage friends, neighbors, and family to come out to Chillicothe and cheer us on—it always helps to have an audience that loves us! Have a great day, work hard, and perform well!

# Spectator Information

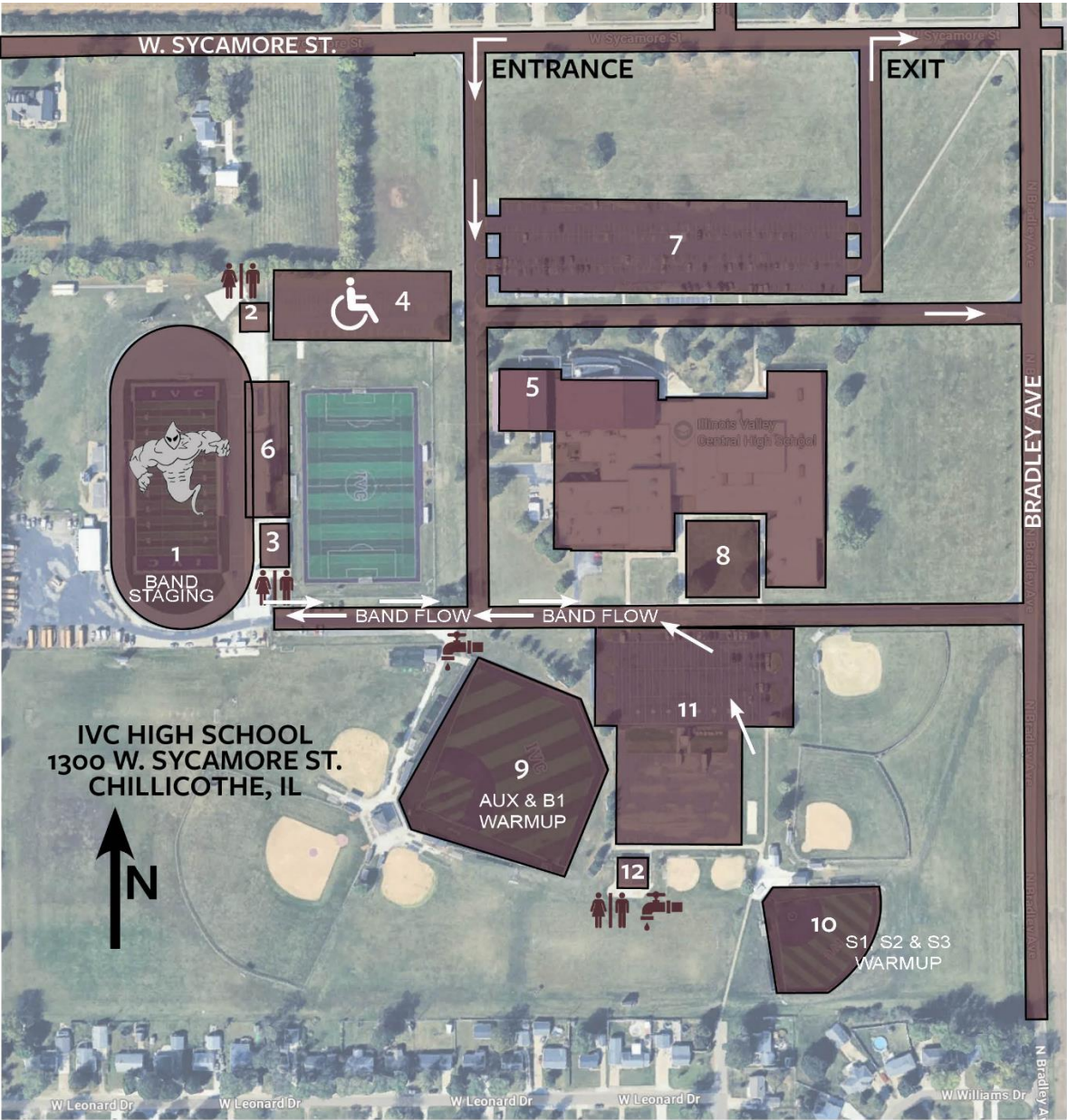
IVC is located at 1300 W. Sycamore Street in Chillicothe, IL.

Public Parking is accessible from Sycamore Avenue, on the northeast side of the school. Handicap Parking is located on the north side of the stadium, entering from the intersection at Sycamore and Bradley Avenue.

Admission is \$10 for adults, \$5 for students and seniors, and children under 5 are admitted free of charge. Concessions include burgers, pork chops, pizza, hot dogs, candy, and drinks, payable with cash, card, or QR code. There is a separate concessions stand for band members in the bus parking area.

# IVC Competition Schedule

4:00 PM	Class A – St. Joseph-Ogden	7:15 PM	Class 4A – <b>The Normal Marching Band</b>
4:15 PM	Class A – Farmington Central	7:30 PM	Class 4A – Galesburg
4:30 PM	Class A – Dwight D. Eisenhower	8:00 PM	Class 5A – Champaign Central
5:00 PM	Class 2A – Richwoods	8:15 PM	Class 5A – Morton
5:15 PM	Class 2A – Danville	8:30 PM	Exhibition – IVC
5:30 PM	Class 2A – Kewanee	8:45 PM	Awards
6:45 PM	Class 3A – Metamora		
7:00 PM	Class 3A – Pekin		



MAP KEY

- 1

..... Taylor Field
- 2

..... Public Entrance
- 3

..... Main Concessions
- 4

..... Handicap Parking
- 5

..... Director / Judges Hospitality Room
- 6

..... Public Seating
- 7

..... Public Parking
- 8

..... Percussion Warmup
- 9

..... Auxiliary Warmup
- 10

..... Band Warmup
- 11

..... Band Parking
- 12

..... Band Concessions

- ..... Restroom
- ..... Water Cooling Station